

# ProphyCare®

By DIRECTA

Directa's products are developed and evaluated by our selected team of highly-qualified and renowned Swedish and international dentists with the aim of making life easier for the dentist in his daily clinical work.

**DIRECTA**  
directadental.com



## **ProphyCare<sup>®</sup>** **complete line of prophylaxis products**

More than ever preventive dentistry demands better products for better results. Directa's prophylaxis product line offers and delivers innovative solutions for such demands. ProphyCare Prophy Paste, one of the most well known brands worldwide, offers reliable results ranging from regular cleaning of the teeth to more complicated implant maintenance procedures.

The coarse and medium pumice based paste is ideal for the removal of plaque, calculus and stains caused by e.g. coffee, tea, tobacco, while our distinctive fine and x-fine silica based prophy paste offers a gentle and safe solution for the polishing of Implants, porcelain crowns, composite restorations and more.

The new universal Prophy Paste PRO is a unique silica based paste that starts with larger coarse grit particles which break down to small fine particles for polishing during the same procedure. Directa's ProphyCare products deliver essential prophylaxis dental treatments for halting the progression of periodontal disease and gingivitis.

# ProphyCare®

## ProphyCare® Prophy Paste

Prophy Paste  
Prophy Paste Single Dose  
Prophy Paste PRO

**page: 4-13**

page: 4-11  
page: 12-13  
page: 14-15

## ProphyCare® Accessories

Prophy Cups  
Prophy Angel  
FixyDap

**page 14-19**

page: 16-17  
page: 18-19  
page: 20-21

## ProphyCare® Prophy Powder

**page 22**

## ProphyCare® Oral Hygiene

Plac-O-Tec  
Rondell

**page 23**

page: 23  
page: 23

ProphyCare®

**Profylaxpasta CCS**

För mycket ojämna ytor och stark missfärgning

**Prophy Paste CCS**

For very rough surfaces and very discoloured teeth

**Pâte Prophylactique CCS**

Pour surfaces très rugueuses et dents très tachées

**Prophypaste CCS**

Gegen stark aufgeraute Oberflächen und besonders starken Zahnschmelzabtrag

RDA 250

ProphyCare®

**Profylaxpasta CCS**

För ojämna ytor och tjock plack

**Prophy Paste CCS**

For rough surfaces and thick plaque layers

**Pâte Prophylactique CCS**

Pour surfaces rugueuses et plaques épaisses

**Prophypaste CCS**

Gegen raue Oberflächen und stärkeren Zahnbelag

RDA 170





## ProphyCare® Prophy Paste various grits for various needs

Prophy Paste is second to none in performance, handling and dispensing. The unique non-splattering, homogeneous formula does not dry out, liquify or separate. Thick layers of plaque and stains are easily removed leaving a fresh and smooth minty sensation after each treatment. Packed in easy to dispense, colour coded tubes and single dose disposable cups. Available in 4 different grits from coarse to extra-fine. Contains 0,1% fluoride.

“The perfect starter, effective removal of stubborn stains”



## ProphyCare® Prophy Paste Blue Coarse RDA 250, 125 micron

Prod No: 731113 Prophy Paste Tubes, 96g 60ml  
Prod No: 690123 Prophy Paste Single Dose, 144 x 2 g

Perfect starter  
For discoloured surfaces and thick layers of plaque  
Effective removal of stubborn stains caused by e.g. coffee, tea, tobacco  
Abrasive agent: pumice  
Contains 0,1% fluoride  
Use in combination with other Prophy Paste



“Less  
abrasive,  
but  
still  
effective”

# ProphyCare® Prophy Paste Green Medium RDA 170, 70 micron

Prod No: 731114 Prophy Paste Tubes, 97g 60ml  
Prod No: 690122 Prophy Paste Single Dose, 144 x 2 g

Perfect starter when coarse Prophy Paste is not needed  
For thick layers of plaque and discoloured surfaces  
Effective removal of stains caused by e.g. coffee, tea, tobacco  
Abrasive agent: pumice  
Contains 0,1% fluoride  
Use in combination with other Prophy Paste

“Gentle  
cleaning,  
tissue  
friendly  
stain  
remover”



## ProphyCare® Prophy Paste Red Fine RDA 120, 20 micron

Prod No: 731112 Prophy Paste Tubes, 84g 60ml  
Prod No: 690121 Prophy Paste Single Dose, 144 x 2 g

For removing plaque and surface discolourations  
For small amount of plaque, root surfaces and lightly discoloured teeth  
Excellent for polishing  
Abrasives agent: silica  
Contains 0,1% fluoride  
Use in combination with other Prophy Paste





“Ideal  
for  
final  
polishing”

## ProphyCare® Prophy Paste Yellow Extra Fine RDA 40, 2 micron

Prod No: 731111 Prophy Paste Tubes, 84g 60ml  
Prod No: 690120 Prophy Paste Single Dose, 144 x 2 g

For final polishing of teeth and fillings  
For pediatric dentistry  
Low abrasion ideal for polish in patients with cervical toothbrush abrasion lesions  
Ideal for polishing implants  
Gives a smooth surface  
Ideal after air polishing treatment  
Abrasive agent: silica  
Contains 0,1% fluoride  
Use in combination with other Prophy Paste

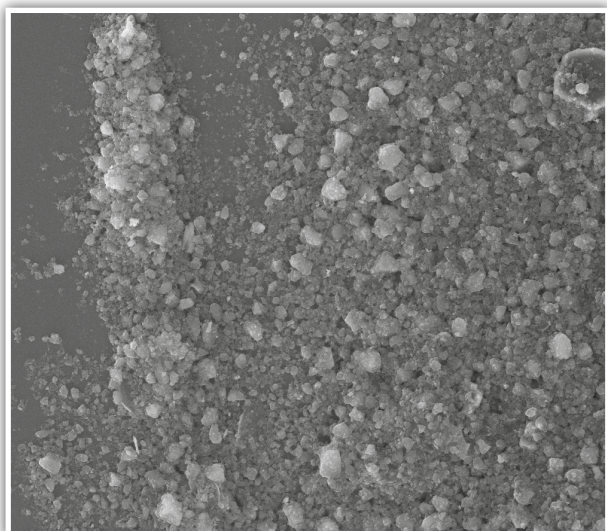
## Selection Guide

	Blue RDA 250	Green RDA 170	Red RDA 120	Yellow RDA 40
Starter	●	●		
Very discoloured surfaces	●			
Thick plaque	●	●		
Discoloured teeth		●		
Small amounts of plaque			●	
Root surfaces			●	
Slightly discoloured teeth			●	
Fillings				●
Pediatric				●
Cervical toothbrush abrasion lesions				●
Implants			●	●
Final polishing			●	●
After air polishing treatment			●	●
Final polish				●

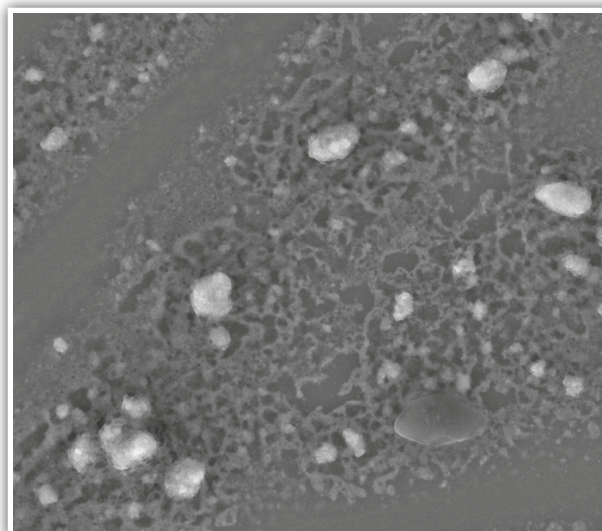
### Select the appropriate prophy paste according to dental substrate and degree of discolouration.

For best and long lasting results use at least two different prophy paste RDA values for each treatment - RDA 250 and/or RDA 170 for cleaning and RDA 120 and/or RDA 40 for polishing. It is advised to always switch to a separate rubber cup for each finer grit agent. RDA can be measured on two different scales; 10 or 100. ProphyCare Prophy Paste PRO is measured with the 10 scale and prophy paste with the 100 scale.

### Homogeneous mixture of abrasive components ensures professional results



Electron microscope image of Prophy Paste.



Electron microscope image of other brands.

## Features

Supplied in colour-coded tubes or single doses, available in 4 grits ranging from coarse to extra-fine  
 Contains 0,1% fluoride. Supports caries prevention  
 Can be used in combination with chlorhexidine  
 Contains castor oil - supports lubrication of dry mouth  
 Optimized consistency for low consumption: non-splattering, homogeneous formula  
 Stays in the polishing cup, does not splatter or dry out, liquify or separate  
 Optimal tube size - easy to dispense, easy to clean, easy to store  
 Mild mint taste  
 Neutral pH (5-6)



# 4

## reasons to use ProphyCare® Prophy Paste Single Dose

---

### Maximum hygiene

Always a fresh sealed package. No risk of cross contamination, and the highest hygiene guarantee for your patient.

---

### Adhesive base

The single dose cup has an adhesive base that easily sticks to the glove or any other surface.

---

### No waste

The shallow packaging with rounded edges is designed to minimize waste. All the content can easily be collected by the polishing cup.

---

### Perfect size

Each package contains the ideal quantity for one treatment.

---





## ProphyCare® Prophy Paste Single Dose Blue, Green, Red & Yellow

Prod No: 690119-23, 144 single doses x 2 g  
Available in assorted or refill packages.

ProphyCare Prophy Paste in single dose 2 g cups for maximum hygiene. Always a fresh paste in a sealed package giving the highest hygiene guarantee for your patient. The single dose cup has a convenient adhesive base that helps the cup stick to any surface, such as on a glove or on a tray.

Prophy Paste's mild mint taste and appealing texture is pleasant for patients of all ages and does not splatter, liquify or separate and is easy to rinse-off. Contains fluoride to remineralize enamel thus supporting caries prevention. Available in single grit or assorted packages of 144 cups with a complete selection guide to help choose the appropriate pastes according to degree of stains and material to be polished.

# 4

## reasons to use ProphyCare® Prophy Paste PRO

### Low abrasion and still excellent cleaning effect

Prophy Paste PRO low RDA value of 20 offers effective stain removal properties at the beginning of the treatment and decreases progressively to a lower RDA value of 5, giving the paste its final polishing properties at the end of the treatment.

### One step procedure

The same paste is used for stain removal and final polishing. ProphyPaste PRO is the one-step prophy paste for outstanding cleaning & polishing results that offers decreased treatment time.

### Remineralizing agent

Contains fluoride to remineralize enamel after polishing, thus supporting caries prevention.

### Integrated abrasion ariability

Prophy Paste PRO's high cleaning power converts into gentle polishing as the particles fragment.



## ProphyCare® Prophy Paste PRO Lilac Universal

Prod No: 741111 Prophy Paste PRO Tubes, 84g 60 ml

Prod No: 690125 Prophy Paste PRO, Single Dose, 144 pcs, 2g

ProphyPaste PRO is the one-step prophy paste for outstanding cleaning and polishing results that offers decreased treatment time. The same paste is used for stain removal and final polishing. Prophy Paste PRO's high cleaning power converts into gentle polishing as the particles are fragmented. Prophy Paste PRO's RDA value of 20 offers effective stain removal properties at the beginning of the treatment and decreases progressively to a lower RDA value of 5, giving the paste its final polishing properties at the end of the treatment.

Prophy Paste's mild mint taste and appealing texture is pleasant for patients of all ages and does not splatter, liquify or separate and is easy to rinse-off. Contains fluoride to remineralize enamel after polishing, thus supporting caries prevention. Available in single doses and tubes.



## Features

Cleans and polishes

Contains 0,1% fluoride. Supports caries prevention

Can be used in combination with chlorhexidine

Contains castor oil - supports lubrication of dry mouth

Optimized consistency for low consumption: non-splattering, homogeneous formula

Stays in the polishing cup, does not splatter or dry out, liquify nor separate

Available in tubes or single dose packages

Optimal tube size - easy to dispense, easy to clean, easy to store

Mild mint taste

Neutral pH (5-6)

## Selection Guide

Prophy Paste PRO paste breaks down from coarse to fine grit during treatment.

Prophy Paste PRO	
Starter	●
Very discoloured surfaces	
Thick plaque	
Discoloured teeth	●
Universal paste	●
Small amounts of plaque	●
Root surfaces	●
Slightly discoloured teeth	●
Fillings	●
Pediatric	●
Cervical toothbrush abrasion lesions	●
Implants	●
Final polishing	●
After air polishing treatment	●
To be used for polishing after scaling to relieve hypersensitivity after treatment	●

RDA value are measured in two scales 10 and 100. ProphyCare PRO is measured with the 10 scale and CCS prophy paste with the 100 scale.

# 4

## reasons to use ProphyCare® Prophy Cup

---

### Interior webbing

Inner structure design minimizes splatter and increases friction for efficient stain removal.

---

### Exterior ridges

Outer ridges optimize interproximal cleaning and splatter control. Soft flare improves subgingival access.

---

### Soft edge

Flexible flare for improved subgingival access and efficient plaque removal.

---

### Protective base

Wider base designed to prevent prophy paste from reaching the contra angle.

---







## ProphyCare® Prophy Cup optimal cleaning, superior paste holding

Prod No: 690131, Prophy Cups, screw-in, 144 pcs  
Prod No: 690132, Prophy Cups, latch type, 144 pcs

The exclusive soft, flexible and 100% latex-free ProphyCare Prophy Cup flares and flexes to contours of teeth to aid in selective stain removal and interproximal cleaning with less pressure and operator fatigue. Optimized size for easy access in hard to reach areas without compromising the paste holding capacity. The unique design is suitable for treatment on adults and pediatric use and to substitute pointed polishers.

The soft flare of the prophy cup gently massages the gingiva and reaches the pockets for effective plaque biofilm removal for improved subgingival access. The exterior ridges optimize interproximal stain removal while the interior webbing holds adequate amount of prophy paste to minimize splatter and increases stain removal. ProphyCare Prophy Cups are designed with a wider base to prevent the prophy paste from reaching the contra angle. Available in vibration-free screw type and latch type (stainless steel).

# 4

## reasons to use ProphyCare<sup>®</sup> Prophy Angle

---

### Interior webbing

Inner structure design minimizes splatter and increases friction for efficient stain removal.

---

### Exterior ridges

Outer ridges optimize interproximal cleaning and splatter control. Soft flare improves subgingival access.

---

### Maximum hygiene

Designed to minimize risk of cross contamination and reduce maintenance of the handpiece.

---

### Ergonomic design

Slim neck, ergonomic angle and round head for enhanced visibility and comfortable access to all areas of the mouth.

---



## ProphyCare® Prophy Angle maximum hygiene and enhanced comfort

Prod No: 690130 Prophy Angle, 144 pcs

Disposable prophy angle in polycarbonate with soft, flexible 100% latex-free cup for low speed prophy attachment handpieces. Prophy Angle minimize prophy paste particles to enter the handpiece and damage the mechanism. Smooth running, silent, vibration-free and no overheating. With its ergonomic shape and slim neck design Prophy Angle enhances access to posterior teeth and increases comfort for the patient while reducing hand fatigue and repetitive wrist motion for the hygienist.

The exclusive ProphyCare design cup flares and flexes to tooth contour to aid in selective stain removal and optimize interproximal cleaning and splatter control with less pressure and operator fatigue. The soft flare improve the subgingival access by gently massages the gingiva and reaches the pockets for effective plaque biofilm removal. The size of the cup is optimized for easy access in hard to reach areas without compromising the paste holding capacity. The interior webbing holds adequate amount of prophy paste, minimizes splatter and increases stain removal.

For treatment on adults and pediatric use and as a substitute for pointed polishers. To be disposed after usage and when changing to abrasive agents with smaller grit. Individually wrapped single use prophy angle with attached rubber cup, packaged 144 pcs per box.

## FixyDap™ with Prophy Paste Tubes

Prod No: 411484 FixyDap™, 250 pcs

A practical and hygienic alternative to dispense ProphyPaste. Dispense the needed amount of prophy paste in the disposable FixyDap cup. Clips to the side of a tray or use the adhesive base to stick to any surface such as a glove.

Prophy Paste CCS  
For removing plaque and discolourations  
Pâte Prophylactique  
Pour éliminer la plaque et les taches  
Prophypaste CCS  
Gegen Zahnbelag und Verfärbung

20

Prophy Paste CCS  
Pâte Prophylactique  
Prophypaste CCS

# 4

## reasons to use ProphyCare® ProphyPowder

### Accessible & effective

Safe and effective way to remove stains. ProphyCare ProphyPowder will clean the tooth surface, penetrating into deep pits, fissures and interproximal areas and make you save time.

### Removes heavy stains

Removes stubborn and heavy stains, with minimal damage to teeth.

### Fresh lemon taste

Its lemon aroma eliminates any salty aftertaste leaving a fresh feeling in the mouth.

### Anti-clogging

Contains anti-clogging agents for maximum flow and trouble-free performance in your air polishing units



## ProphyCare® Prophy Powder effective powder for stain and plaque removal

Prod No: 741000 ProphyCare® Prophy Powder, lemon taste, supragingival, 1 x 250 g

ProphyCare Prophy Powder is the new effective powder for removal of stains and plaque. The Prophy Powder effectively cleans the tooth surface, penetrating into deep pits, fissures and interproximal areas. Heavy stains are thoroughly and gently removed. ProphyCare Prophy Powder contains anti-clogging agents for a trouble-free performance in any air polishing unit, ensuring an even and maximum flow of powder is continuously applied on each patient. Safe for use in all air-polishing units.

Using the prophy powder is time saving, safe and effective for stain and plaque removal thus minimizing the operator and patient fatigue. Its lemon aroma eliminates any salty aftertaste leaving the mouth feeling refreshed.



## Plac-o-Tect™ colours plaque made visible with UV-light

Prod No: 611451 Plac-o-Tect, intro kit

Plac-o-Tect Plaque disclosing agent is a specially formulated disclosing agent that is only visible when exposed to UV-light. Plac-o-Tect is a simple and innovative way of demonstrating oral hygiene. The patients clearly see the results after tooth cleaning. Invisible when patient leaves the practice.



## Rondell 2 tone disclosing pellets

Prod No: 733552 Rondell Disclosing Pellets, red, 100 pcs  
Prod No: 733553 Rondell Disclosing Pellets, blue, 100 pcs

A convenient and cleaner way of applying disclosing solution. Simply rub the tooth surface with pre-soaked pellets and plaque will appear. New plaque, younger than 3 days, is colored red while older, more dangerous plaque is colored blue. Both are easily brushed off leaving a mild taste of peppermint.

The dual-revealing colors are designed to educate patients and increase their compliance.



## Design By Dentists™

Directa's products are developed and evaluated by our selected team of highly-qualified and renowned Swedish and international dental professionals with the aim of making life easier for the dental professionals in the daily clinical work.

**DIRECTA**  
directadental.com

**DIRECTA AB**

P.O. Box 723,  
194 27 Upplands Väsby, SWEDEN  
+46 8 506 505 75

**DIRECTA INC**

64 Barnabas Road, Unit 3  
Newtown, CT 06470, United States  
203.491.2273

**DIRECTA GERMANY**

Hammergutstr. 11  
92245 Kümmerbruck, GERMANY

info@directadental.com  
www.directadental.com  
www.directadentalgroup.com  
www.facebook.com/directadentalgroup  
www.instagram.com/directadentalgroup  
www.twitter.com/D\_DentalGroup  
www.youtube.com/user/DirectaAB

DirectaDentalGroup

**DIRECTA** **topdental** **ORSING** **parkell**  
directadental.com

2017-05

